

Singleton LGA

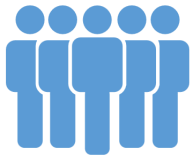
PROFILE

The Singleton Local Government Area is located on the banks of the Hunter River within the Hunter Region of NSW. It is about 200km North West of Sydney.

SOCIOECONOMICS

Based on a range of Census characteristics, Singleton LGA's Index of Disadvantage score is 1013 compared to the NSW score of 996 (Australia 1000). **THIS INDICATES THAT THIS LGA IS LESS DISADVANTAGED THAN THE STATE AND THE NATION.**

OUR PEOPLE



- 87.1%** of the population is Australian-born (NSW 68.6%)
- 0.3%** of people born overseas report poor proficiency in English (NSW 3.4%)
- 3.6%** of the population have a profound or severe disability (NSW 4.9%)
- Total age dependency ratio (proportion of all dependents per 100 working-age population) is 49.5 compared to NSW at 53.1
- The Total Fertility Rate is 2.17. That's **2.17 BIRTHS PER WOMAN** (NSW 1.91)

HEALTH RISKS

CURRENT SMOKERS 19.3 per 100 (NSW 16.2)

CONSUMING ALCOHOL AT LEVELS CONSIDERED TO BE A HIGH RISK TO HEALTH 5.4 per 100 (NSW 4.8)

OVERWEIGHT 35.7 per 100 (NSW 34.6)

OBESE 31.6 per 100 (NSW 26.4)

MUMS AND BUBS

5.9% of babies are low birth-weight (NSW 6.1%)

18.2% of mothers smoke during pregnancy (NSW 12%)



CHRONIC DISEASE

Age Standardised Rate per 100

DIABETES MELLITUS 4.6 (NSW 5.8)

HIGH BLOOD CHOLESTEROL 31.6 (NSW 32.4)

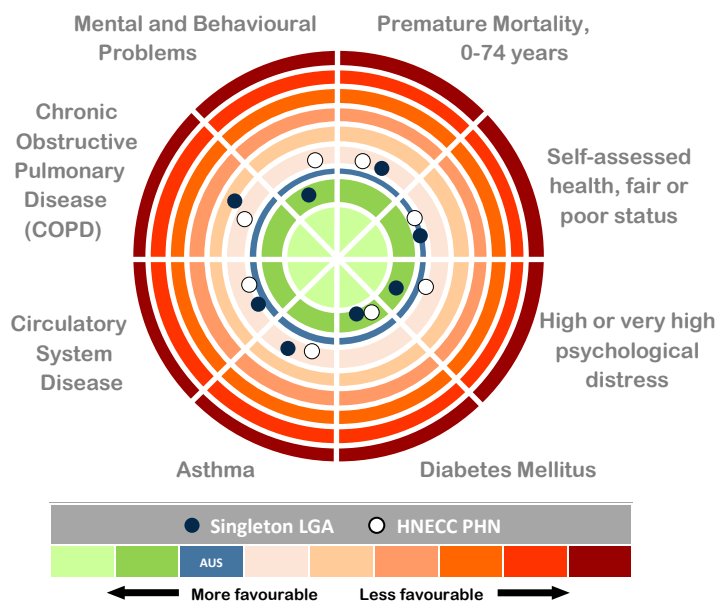
CIRCULATORY SYSTEM DISEASES 18.1 (NSW 17.8)

ASTHMA 11.9 (NSW 9.6)

CHRONIC OBSTRUCTIVE PULMONARY DISEASE (COPD) 3.0 (NSW 2.6)

ARTHRITIS 15.5 (NSW 15.3)

PSYCHOLOGICAL DISTRESS 9.9 (NSW 10.5)



Population
23,884

Median Age
35.1 years
(NSW 37.8 years)

Aboriginal and/or Torres Strait Islander, 4.6% of total population (NSW 2.9%)

65 years +, 11% of total population (NSW 15.2%)

0-14 years, 22.7% of total population (NSW 18.9%)

GP Services
101.7 GPs per 100,000 residents (NSW 113)

Singleton LGA



The Population to 2036 is expected to increase by 0.6% each year

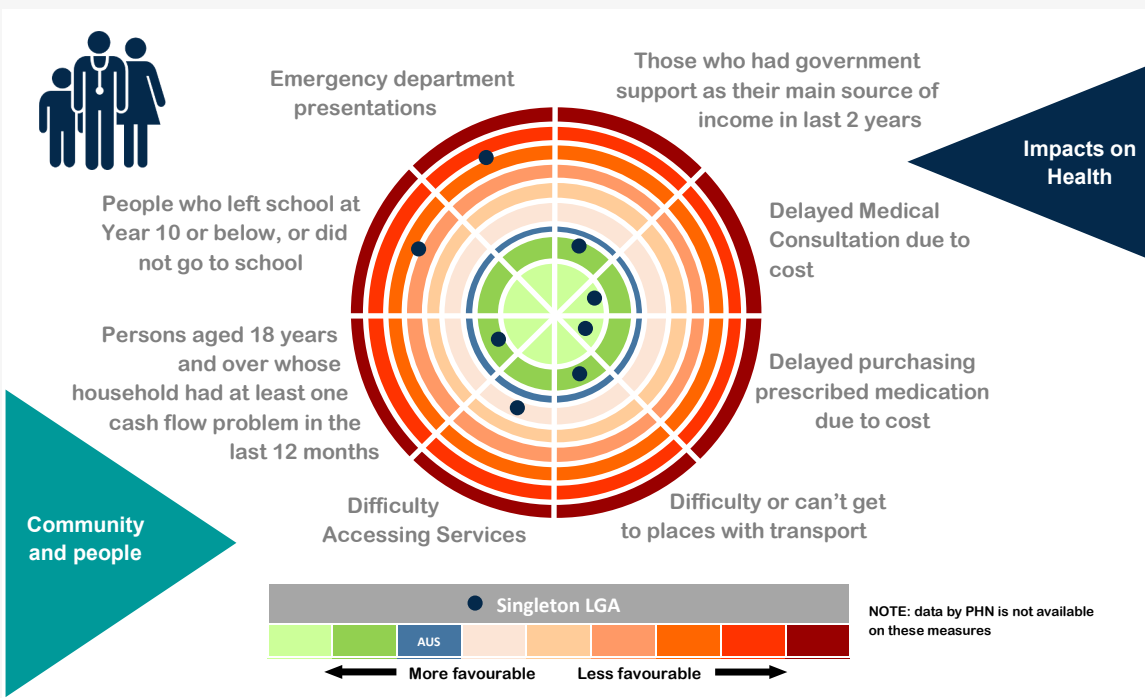
The unemployment rate is 6.6% (NSW 5.8%)

The median age of death is 80 years (NSW 81 years)

77% of dwellings had an internet connection (NSW 76.3%)

18.3% of families are single parent families with children aged less than 15 years (NSW 21.2%)

In 2013-14 there were 7,844 semi-urgent and non-urgent presentations to the Singleton Emergency Department



IMMUNISATIONS

92.5% of children are **FULLY IMMUNISED AT 2 YEARS OF AGE** compared to 90.7% for NSW

70.7% of teenage girls **HAVE RECEIVED THE HPV VACCINE** (NSW 70.8%)

PREVENTABLE HOSPITALISATIONS

For every **1000 PERSONS** admitted to hospital, **29.9 ARE CONSIDERED POTENTIALLY PREVENTABLE**

This compares to the NSW rate of 22.65/1000

SCREENING

CERVICAL CANCER SCREENING participation rates (57.1% of females aged 20-69) are **SLIGHTLY HIGHER THAN THE STATE RATE** (56.1%)

BOWEL CANCER SCREENING participation rates (29.6% of males and 31.3% of females) are **LOWER THAN THE STATE RATES** (31.0% and 35.3% respectively)

BREAST CANCER SCREENING participation rates (54.3% of females aged 50-69 years) are **HIGHER THAN THE STATE RATE** (50.9%)