

Glen Innes Severn LGA

PROFILE

Glen Innes Severn is a Local Government Area in the New England Region of New South Wales. It is 608km north of Sydney and 367km south west of Brisbane.

SOCIOECONOMICS

Based on a range of Census characteristics, Glen Innes Severn LGA's Index of Disadvantage score is 922 compared to the NSW score of 996 (Australia 1000). **THIS INDICATES THAT THIS LGA IS SIGNIFICANTLY MORE DISADVANTAGED COMPARED TO THE STATE AND THE NATION**

OUR PEOPLE

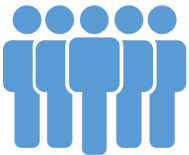
88.4% of the population is Australian-born (NSW 68.6%)

0.12% of people born overseas report poor proficiency in English (NSW 3.4%)

7.0% of the population have a profound or severe disability (NSW 4.9%)

Total age dependency ratio (proportion of all dependents per 100 working-age population) is 73.1 compared to NSW at 53.1

The Total Fertility Rate is 2.46. That's **2.46 BIRTHS PER WOMAN** (NSW 1.91)



HEALTH RISKS

CURRENT SMOKERS 22.8 per 100 (NSW 16.2)

CONSUMING ALCOHOL AT LEVELS CONSIDERED TO BE A HIGH RISK TO HEALTH 5.45 per 100 (NSW 4.8)

OVERWEIGHT 34.2 per 100 (NSW 34.6)

OBESE 31.6 per 100 (NSW 26.4)

MUMS AND BUBS

8.3% of babies are low birth-weight (NSW 6.1%)

27.9% of mothers smoke during pregnancy (NSW 12%)



CHRONIC DISEASE

Age Standardised Rate per 100

DIABETES MELLITUS
5.0 (NSW 5.8)

HIGH BLOOD CHOLESTEROL
31.2 (NSW 32.4)

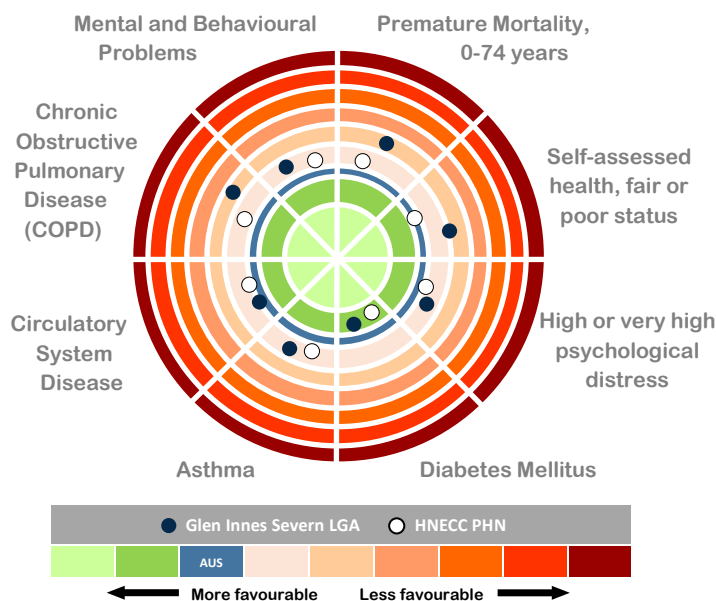
CIRCULATORY SYSTEM DISEASES
18.3 (NSW 17.8)

ASTHMA
11.8 (NSW 9.6)

CHRONIC OBSTRUCTIVE PULMONARY DISEASE (COPD)
3.0 (NSW 2.6)

ARTHRITIS
18.4 (NSW 15.3)

PSYCHOLOGICAL DISTRESS
12.4 (NSW 10.5)



Population
8,966

Median Age
46.3 years
(NSW 37.8 years)

Aboriginal and/
or Torres Strait
Islander, 6.7% of
total population
(NSW 2.9%)

65 years +,
22.8% of total
population
(NSW 15.2%)

0-14 years,
20.5% of total
population
(NSW 18.9%)

GP Services
105.1 GPs
per 100,000
residents
(NSW 113)

Glen Innes Severn LGA



The Population to 2036 is expected to increase by 0.7% each year

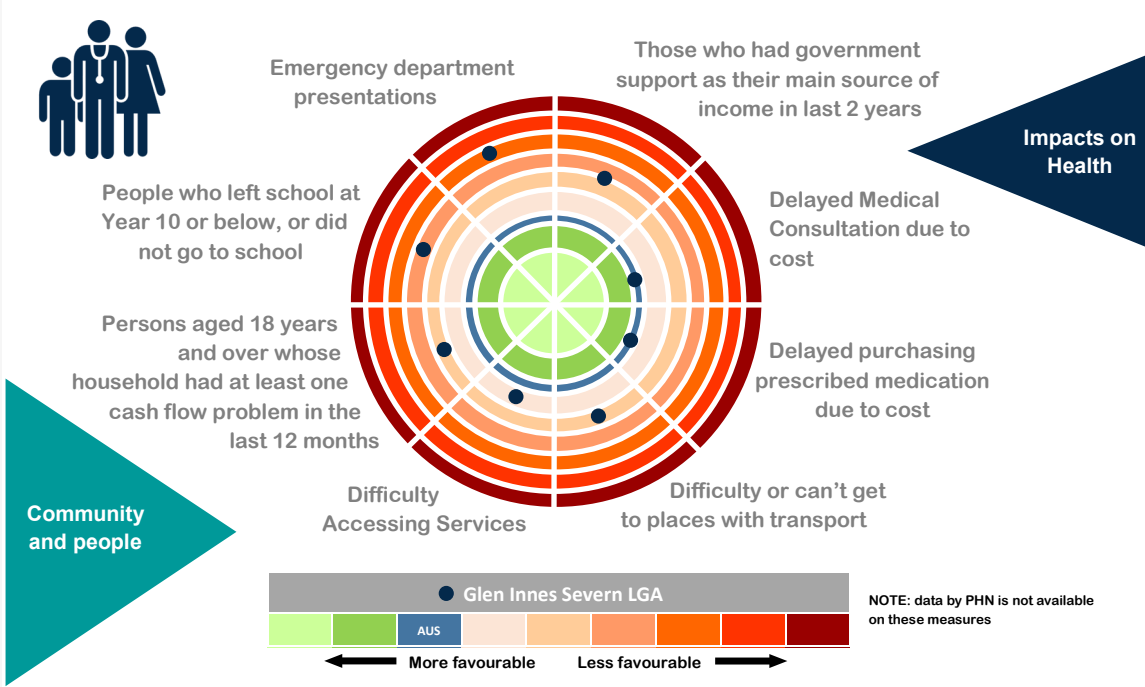
The unemployment rate is 12.2% (NSW 5.8%)

The median age of death is 81 years (NSW 81 years)

61% of dwellings had an internet connection (NSW 76.3%)

29.5% of families are single parent families with children aged less than 15 years (NSW 21.2%)

In 2013-14 there were 4,473 semi-urgent and non-urgent presentations to the Glen Innes Emergency Department



IMMUNISATIONS

90.9% of children are **FULLY IMMUNISED AT 2 YEARS OF AGE** compared to 90.7% for NSW

58.8% of teenage girls **HAVE RECEIVED THE HPV VACCINE** (NSW 70.8%)

PREVENTABLE HOSPITALISATIONS

For every **1000 PERSONS** admitted to hospital, **28.7 ARE CONSIDERED POTENTIALLY PREVENTABLE**. This compares to the NSW rate of 22.65/1000

SCREENING

CERVICAL CANCER SCREENING participation rates (63.2% of females aged 20-69) are **SIGNIFICANTLY HIGHER THAN THE STATE RATE** (56.1%)

BOWEL CANCER SCREENING participation rates (29.9% of males and 37.4% of females) are **CLOSE TO THE STATE RATES** (31.0% and 35.3% respectively)

BREAST CANCER SCREENING participation rates (63.5% of females aged 50-69 years) are **HIGHER THAN THE STATE RATE** (50.9%)