

Gwydir LGA

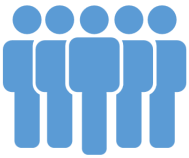
PROFILE

The Gwydir Local Government Area is located in the New England North West region of New South Wales. The northern boundary is located adjacent to the border between NSW and QLD.

SOCIOECONOMICS

Based on a range of Census characteristics, Gwydir LGA's Index of Disadvantage score is 940 compared to the NSW score of 996 (Australia 1000). **THIS INDICATES THAT THIS LGA IS SIGNIFICANTLY MORE DISADVANTAGED THAN THE STATE AND THE NATION**

OUR PEOPLE



- 92.7%** of the population is Australian-born (NSW 68.6%)
- 0.0%** of people born overseas report poor proficiency in English (NSW 3.4%)
- 7.2%** of the population have a profound or severe disability (NSW 4.9%)
- Total age dependency ratio (proportion of all dependents per 100 working-age population) is 76.9 compared to NSW at 53.1
- The Total Fertility Rate is 2.39. That's **2.39 BIRTHS PER WOMAN** (NSW 1.91)

HEALTH RISKS

CURRENT SMOKERS 21.6 per 100 (NSW 16.2)

CONSUMING ALCOHOL AT LEVELS CONSIDERED TO BE A HIGH RISK TO HEALTH 5.4 per 100 (NSW 4.8)

OVERWEIGHT 36.8 per 100 (NSW 34.6)

OBESE 32.5 per 100 (NSW 26.4)

MUMS AND BUBS

14.3% of mothers smoke during pregnancy (NSW 12%)



CHRONIC DISEASE

Age Standardised Rate per 100

DIABETES MELLITUS 5.5 (NSW 5.8)

HIGH BLOOD CHOLESTEROL 31.1 (NSW 32.4)

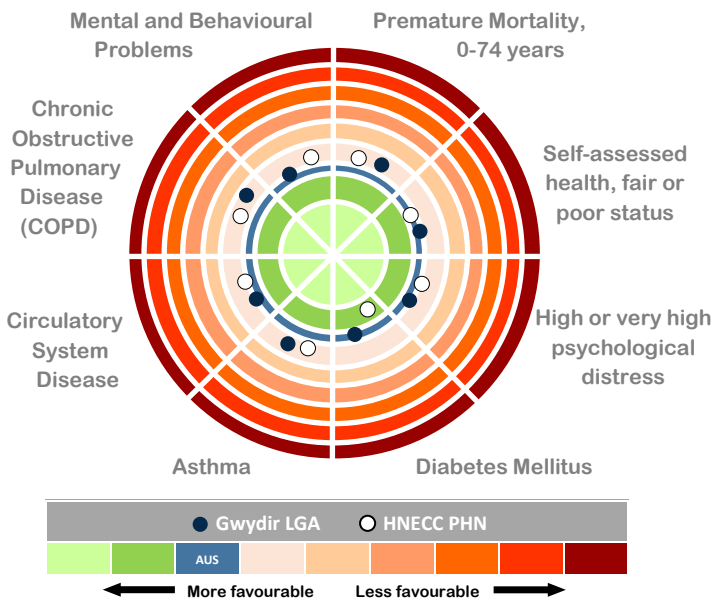
CIRCULATORY SYSTEM DISEASES 18.6 (NSW 17.8)

ASTHMA 11.8 (NSW 9.6)

CHRONIC OBSTRUCTIVE PULMONARY DISEASE (COPD) 2.8 (NSW 2.6)

ARTHRITIS 18.7 (NSW 15.3)

PSYCHOLOGICAL DISTRESS 11.1 (NSW 10.5)



Population
5,080

Median Age
46.7 years
(NSW 37.8 years)

Aboriginal and/or Torres Strait Islander, 4.5% of total population (NSW 2.9%)

65 years +, 23.9% of total population (NSW 15.2%)

0-14 years, 20.6% of total population (NSW 18.9%)

GP Services
122.35 GPs per 100,000 residents (NSW 113)

Gwydir LGA



The Population to 2036 is expected to decrease by 0.5% each year

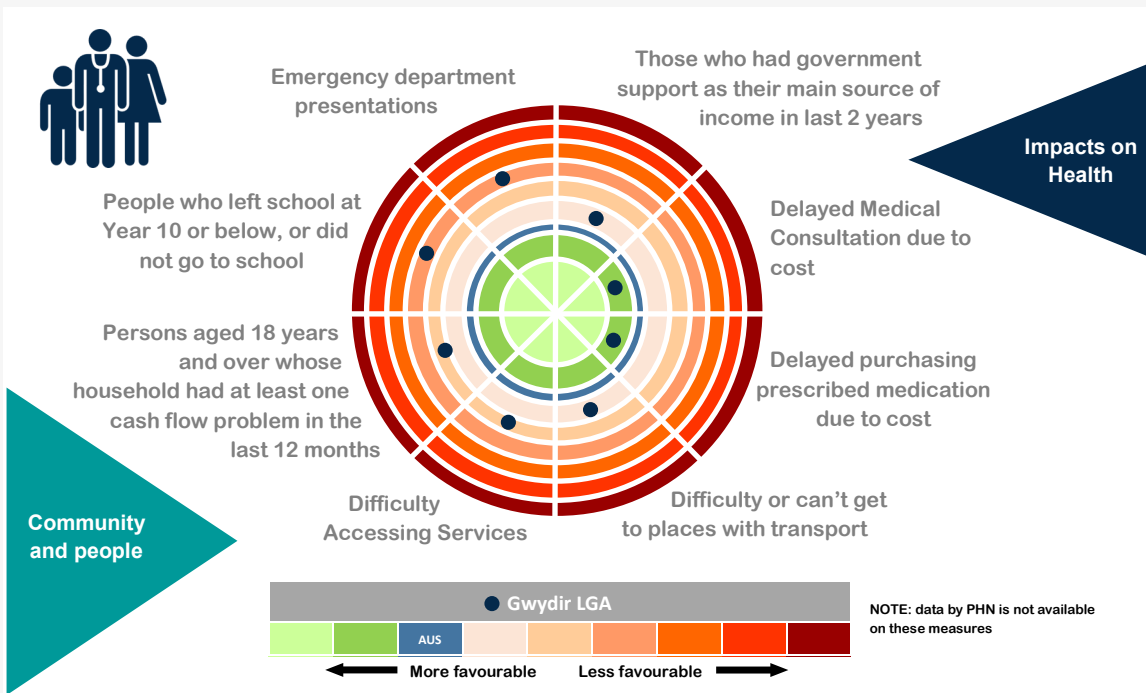
The unemployment rate is 6.9% (NSW 5.8%)

The median age of death is 80.5 years (NSW 81 years)

57.6% of dwellings had an internet connection (NSW 76.3%)

19.9% of families are single parent families with children aged less than 15 years (NSW 21.2%)

In 2013-14 there were 1,910 semi-urgent and non-urgent presentations to the Bingara and Warialda MPS Emergency Departments



IMMUNISATIONS

94.5% of children are **FULLY IMMUNISED AT 2 YEARS OF AGE** compared to 90.7% for NSW

86.4% of teenage girls **HAVE RECEIVED THE HPV VACCINE** (NSW 70.8%)

PREVENTABLE HOSPITALISATIONS

For every **1000 PERSONS** admitted to hospital, **39.2 ARE CONSIDERED POTENTIALLY PREVENTABLE**. This compares to the NSW rate of 22.65/1000

SCREENING

CERVICAL CANCER SCREENING participation rates (55.3% of females aged 20-69) are **SLIGHTLY LOWER THAN THE STATE RATE** (56.1%)

BOWEL CANCER SCREENING participation rates (28.1% of males and 41.3% of females) are **SLIGHTLY LOWER FOR MALES THAN THE STATE RATES AND HIGHER THAN THE STATE RATES FOR FEMALES** (31.0% and 35.3% respectively)

BREAST CANCER SCREENING participation rates (63.7% of females aged 50-69 years) are **HIGHER THAN THE STATE RATE** (50.9%)