

# Narrabri LGA

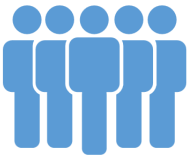
## PROFILE

The Narrabri Local Government Area is located halfway between Brisbane and Sydney, in the Namoi Valley within the New England North West region of New South Wales.

## SOCIOECONOMICS

Based on a range of Census characteristics, Narrabri LGA's Index of Disadvantage score is 953 compared to the NSW score of 996 (Australia 1000). **THIS INDICATES THAT THIS LGA IS SIGNIFICANTLY MORE DISADVANTAGED COMPARED TO THE STATE AND THE NATION**

## OUR PEOPLE



- 89.5%** of the population is Australian-born (NSW 68.6%)
- 0.13%** of people born overseas report poor proficiency in English (NSW 3.4%)
- 4.7%** of the population have a profound or severe disability (NSW 4.9%)
- Total age dependency ratio (proportion of all dependents per 100 working-age population) is 70.9 compared to NSW at 53.1
- The Total Fertility Rate is 2.61. That's **2.61 BIRTHS PER WOMAN** (NSW 1.91)

## HEALTH RISKS

- CURRENT SMOKERS** 22.2 per 100 (NSW 16.2)
- CONSUMING ALCOHOL AT LEVELS CONSIDERED TO BE A HIGH RISK TO HEALTH** 5.4 per 100 (NSW 4.8)
- OVERWEIGHT** 35.0 per 100 (NSW 34.6)
- OBESE** 33.3 per 100 (NSW 26.4)

## MUMS AND BUBS

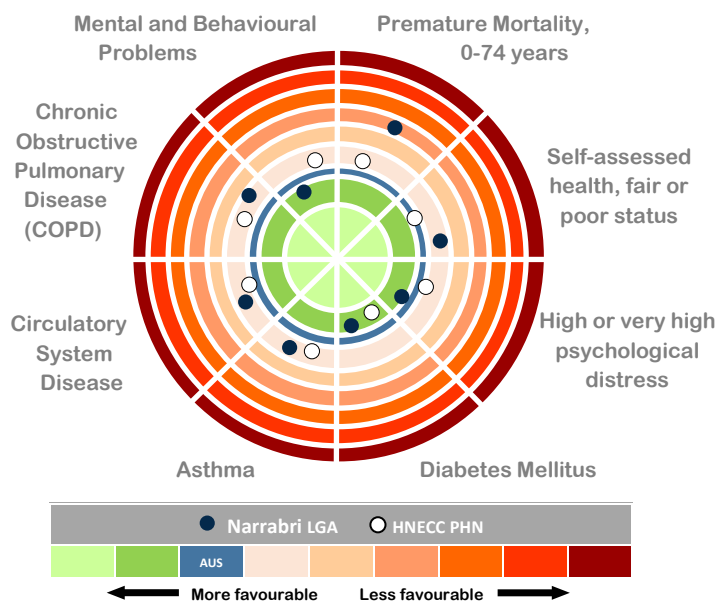
- 5.2%** of babies are low birth-weight (NSW 6.1%)
- 24.9%** of mothers smoke during pregnancy (NSW 12%)



## CHRONIC DISEASE

Age Standardised Rate per 100

- DIABETES MELLITUS** 5.13 (NSW 5.8)
- HIGH BLOOD CHOLESTEROL** 33.4 (NSW 32.4)
- CIRCULATORY SYSTEM DISEASES** 19.8 (NSW 17.8)
- ASTHMA** 11.7 (NSW 9.6)
- CHRONIC OBSTRUCTIVE PULMONARY DISEASE (COPD)** 2.8 (NSW 2.6)
- ARTHRITIS** 16.0 (NSW 15.3)
- PSYCHOLOGICAL DISTRESS** 10.0 (NSW 10.5)



**Population**  
**13,764**

**Median Age**  
**39.1 years**  
(NSW 37.8 years)

**Aboriginal and/or Torres Strait Islander, 13% of total population**  
(NSW 2.9%)

**65 years +, 14.9% of total population**  
(NSW 15.2%)

**0-14 years, 21.6% of total population**  
(NSW 18.9%)

**GP Services**  
**81.9 GPs per 100,000 residents**  
(NSW 113)

# Narrabri LGA



The Population to 2036 is expected to increase by 0.6% each year

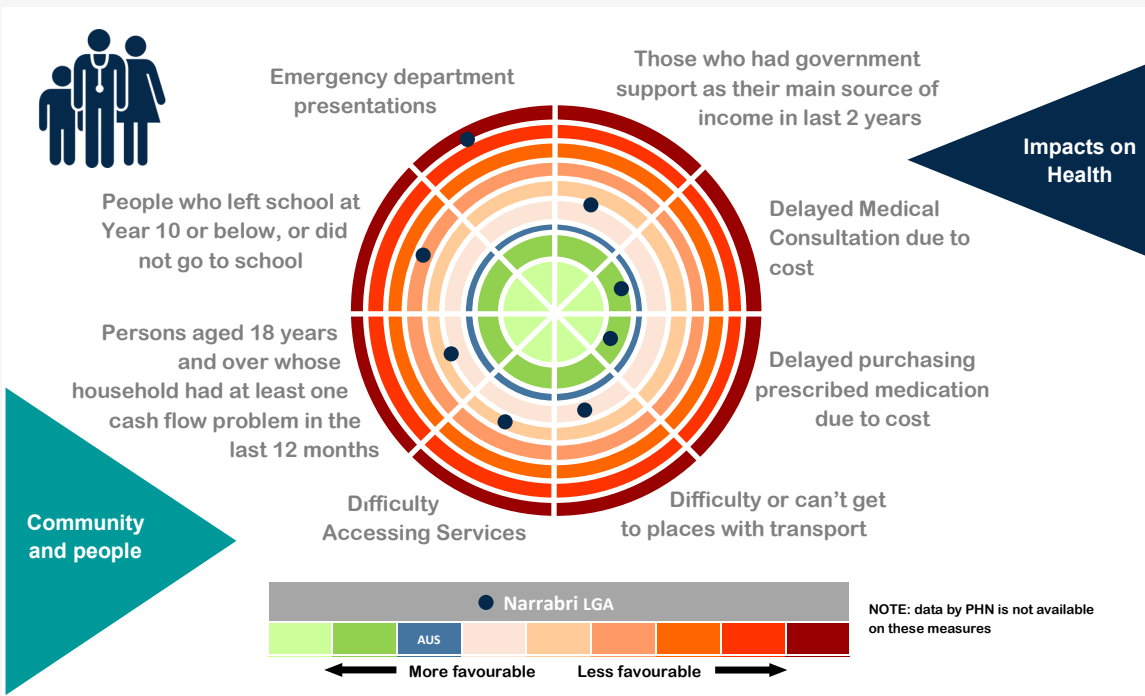
The unemployment rate is 7.8% (NSW 5.8%)

The median age of death is 78 years (NSW 81 years)

63.4% of dwellings had an internet connection (NSW 76.3%)

23.6% of families are single parent families with children aged less than 15 years (NSW 21.2%)

In 2013-14 there were 4,767 semi-urgent and non-urgent presentations to the Narrabri and Wee Waa Emergency Departments



**IMMUNISATIONS**

92.3% of children are **FULLY IMMUNISED AT 2 YEARS OF AGE** compared to 90.7% for NSW

75.6% of teenage girls **HAVE RECEIVED THE HPV VACCINE** (NSW 70.8%)

**PREVENTABLE HOSPITALISATIONS**

For every **1000 PERSONS** admitted to hospital, **36.7 ARE CONSIDERED POTENTIALLY PREVENTABLE**. This compares to the NSW rate of 22.65/1000

**SCREENING**

**CERVICAL CANCER SCREENING** participation rates (47% of females aged 20-69) are **SIGNIFICANTLY LOWER THAN THE STATE RATE** (56.1%)

**BOWEL CANCER SCREENING** participation rates (29.4% of males and 29.8% of females) are **A LOT LOWER THAN THE STATE RATES** (31.0% and 35.3% respectively)

**BREAST CANCER SCREENING** participation rates (64.1% of females aged 50-69 years) are **HIGHER THAN THE STATE RATE** (50.9%)