

# Dungog LGA



**phn**  
HUNTER NEW ENGLAND  
AND CENTRAL COAST  
An Australian Government Initiative

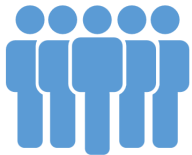
## PROFILE

The Dungog Local Government Area is part of the Hunter Region in New South Wales and consists predominantly of very rugged to hilly country which becomes less rugged from north to south.

## SOCIOECONOMICS

Based on a range of Census characteristics, Dungog LGA's Index of Disadvantage score is 989 compared to the NSW score of 996 (Australia 1000). **THIS INDICATES THAT THIS LGA IS SLIGHTLY MORE DISADVANTAGED COMPARED TO THE STATE AND THE NATION**

## OUR PEOPLE



**90%** of the population is Australian-born (NSW 68.6%)

**0%** of people born overseas report poor proficiency in English (NSW 3.4%)

**5.9%** of the population have a profound or severe disability (NSW 4.9%)

Total age dependency ratio (proportion of all dependents per 100 working-age population) is 61.6 compared to NSW at 53.1

The Total Fertility Rate is 2.06. That's **2.06 BIRTHS PER WOMAN** (NSW 1.91)

## HEALTH RISKS

**CURRENT SMOKERS** 19.2 per 100 (NSW 16.2)

**CONSUMING ALCOHOL AT LEVELS CONSIDERED TO BE A HIGH RISK TO HEALTH** 5.4 per 100 (NSW 4.8)

**OVERWEIGHT** 35.1 per 100 (NSW 34.6)

**OBESE** 30.6 per 100 (NSW 26.4)

## MUMS AND BUBS

**6.5%** of babies are low birth-weight (NSW 6.1%)

**19.2%** of mothers smoke during pregnancy (NSW 12%)



## CHRONIC DISEASE

Age Standardised Rate per 100

**DIABETES MELLITUS**  
4.3 (NSW 5.8)

**HIGH BLOOD CHOLESTEROL**  
31.0 (NSW 32.4)

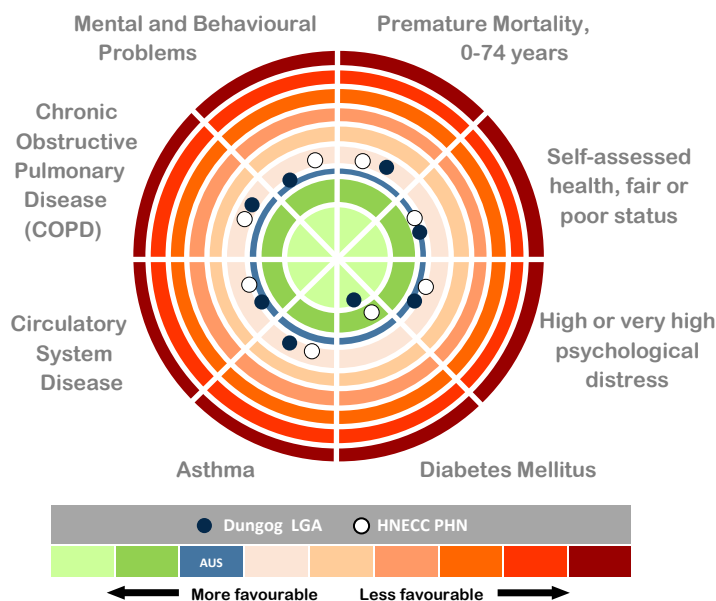
**CIRCULATORY SYSTEM DISEASES**  
18.0 (NSW 17.8)

**ASTHMA**  
11.4 (NSW 9.6)

**CHRONIC OBSTRUCTIVE PULMONARY DISEASE (COPD)**  
2.8 (NSW 2.6)

**ARTHRITIS**  
16.1 (NSW 15.3)

**PSYCHOLOGICAL DISTRESS**  
12.2 (NSW 10.5)



**Population**  
**9,108**

**Median Age**  
**44.7 years**  
(NSW 37.8 years)

**Aboriginal and/**  
**or Torres Strait**  
**Islander, 3.8% of**  
**total population**  
(NSW 2.9%)

**65 years +,**  
**18.7% of total**  
**population**  
(NSW 15.2%)

**0-14 years,**  
**20.0% of total**  
**population**  
(NSW 18.9%)

**GP Services**  
**48.3 GPs per**  
**100,000**  
**residents**  
(NSW 113)

# Dungog LGA



**phn**  
HUNTER NEW ENGLAND  
AND CENTRAL COAST  
An Australian Government Initiative

The Population to 2036 is expected to increase by 2.5% each year

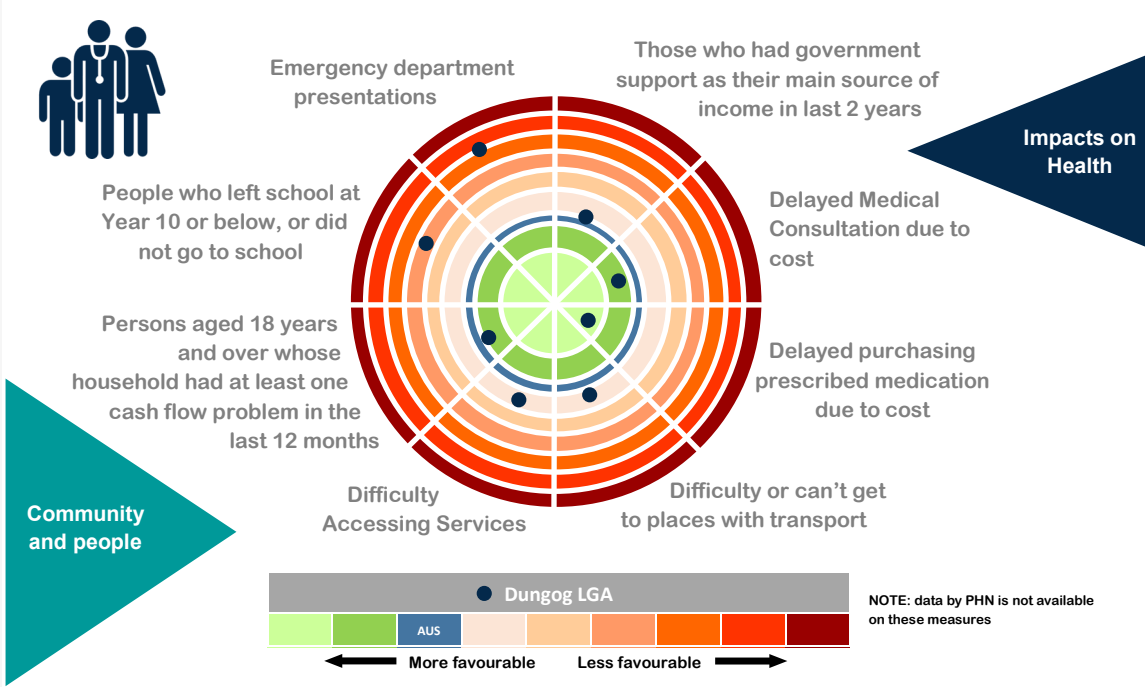
The unemployment rate is 7.0% (NSW 5.8%)

The median age of death is 81 years (NSW 81 years)

70% of dwellings had an internet connection (NSW 76.3%)

21.6% of families are single parent families with children aged less than 15 years (NSW 21.2%)

In 2013-14 there were 2,308 semi-urgent and non-urgent presentations to the Dungog Emergency Department



**IMMUNISATIONS**

95.3% of children are **FULLY IMMUNISED AT 2 YEARS OF AGE** compared to 90.7% for NSW

72.7% of teenage girls **HAVE RECEIVED THE HPV VACCINE** (NSW 70.8%)

**PREVENTABLE HOSPITALISATIONS**

For every **1000 PERSONS** admitted to hospital, **26.7 ARE CONSIDERED POTENTIALLY PREVENTABLE**

This compares to the NSW rate of 22.65/1000

**SCREENING**

**CERVICAL CANCER SCREENING** participation rates (57.2% of females aged 20-69) are **HIGHER THAN THE STATE RATE** (56.1%)

**BOWEL CANCER SCREENING** participation rates (31.3% of males and 43.6% of females) are **HIGHER THAN THE STATE RATES** (31.0% and 35.3% respectively)

**BREAST CANCER SCREENING** participation rates (62.7% of females aged 50-69 years) are **HIGHER THAN THE STATE RATE** (50.9%)