

Gloucester LGA

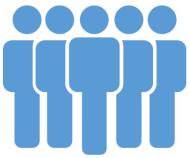
PROFILE

The Gloucester Local Government Area is located in the foothills of the Barrington Tops National Park, about a three hours drive North-West of Sydney. Gloucester is about an hour away from Taree on the NSW coastline.

SOCIOECONOMICS

Based on a range of Census characteristics, Gloucester LGA's Index of Disadvantage score is 951 compared to the NSW score of 996 (Australia 1000). **THIS INDICATES THAT THIS LGA IS MORE DISADVANTAGED THAN THE STATE AND THE NATION AS A WHOLE**

OUR PEOPLE



- 88.3%** of the population is Australian-born (NSW 68.6%)
- 0.6%** of people born overseas report poor proficiency in English (NSW 3.4%)
- 6.7%** of the population have a profound or severe disability (NSW 4.9%)
- Total age dependency ratio (proportion of all dependents per 100 working-age population) is 84.0 compared to NSW at 53.1
- The Total Fertility Rate is 2.06. That's **2.06 BIRTHS PER WOMAN** (NSW 1.91)

HEALTH RISKS

CURRENT SMOKERS 21.4 per 100 (NSW 16.2)

CONSUMING ALCOHOL AT LEVELS CONSIDERED TO BE A HIGH RISK TO HEALTH 5.3 per 100 (NSW 4.8)

OVERWEIGHT 35.2 per 100 (NSW 34.6)

OBESE 32.0 per 100 (NSW 26.4)

MUMS AND BUBS

9.6% of babies are low birth-weight (NSW 6.1%)

16.3% of mothers smoke during pregnancy (NSW 12%)



CHRONIC DISEASE

Age Standardised Rate per 100

DIABETES MELLITUS 5.0 (NSW 5.8)

HIGH BLOOD CHOLESTEROL 31.0 (NSW 32.4)

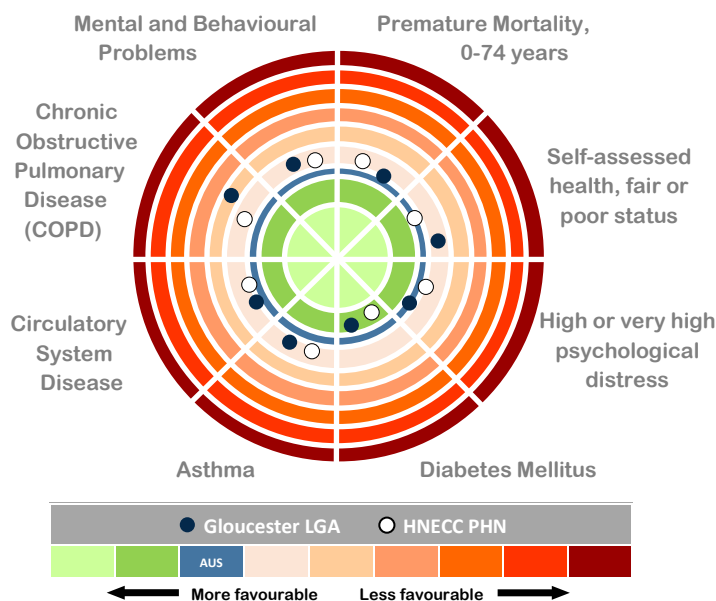
CIRCULATORY SYSTEM DISEASES 18.4 (NSW 17.8)

ASTHMA 11.6 (NSW 9.6)

CHRONIC OBSTRUCTIVE PULMONARY DISEASE (COPD) 3.1 (NSW 2.6)

ARTHRITIS 18.2 (NSW 15.3)

PSYCHOLOGICAL DISTRESS 11.8 (NSW 10.5)



Population
5,064

Median Age
50.8 years
(NSW 37.8 years)

Aboriginal and/or Torres Strait Islander, 5.4% of total population
(NSW 2.9%)

65 years +, 27.5% of total population
(NSW 15.2%)

0-14 years, 19.4% of total population
(NSW 18.9%)

GP Services
146.3 GPs per 100,000 residents
(NSW 113)

Gloucester LGA



phn
HUNTER NEW ENGLAND
AND CENTRAL COAST
An Australian Government Initiative

The Population to 2036 is expected to increase by 1.8% each year

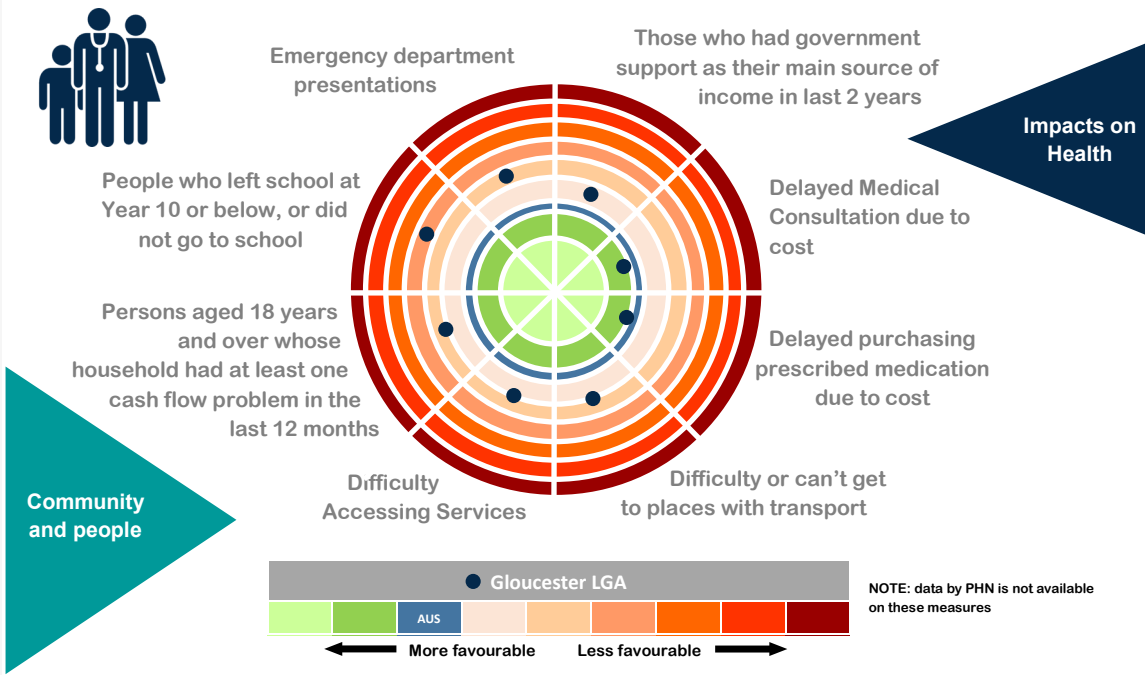
The unemployment rate is 6.6% (NSW 5.8%)

The median age of death is 82 years (NSW 81 years)

65.5% of dwellings had an internet connection (NSW 76.3%)

23.9% of families are single parent families with children aged less than 15 years (NSW 21.2%)

In 2013-14 there were 1,937 semi-urgent and non-urgent presentations to the Gloucester Emergency Department



IMMUNISATIONS

92.8% of children are **FULLY IMMUNISED AT 2 YEARS OF AGE** compared to 90.7% for NSW

70.2% of teenage girls **HAVE RECEIVED THE HPV VACCINE** (NSW 70.8%)

PREVENTABLE HOSPITALISATIONS

For every **1000 PERSONS** admitted to hospital, **28.0 ARE CONSIDERED POTENTIALLY PREVENTABLE**. This compares to the NSW rate of 22.65/1000

SCREENING

CERVICAL CANCER SCREENING participation rates (57.6% of females aged 20-69) are **SIMILAR TO THE STATE RATE** (56.1%)

BOWEL CANCER SCREENING participation rates (31.7% of males and 43.9% of females) are **SIMILAR TO THE STATE RATES FOR MALES AND HIGHER THAN THE STATE RATES FOR FEMALES** (31.0% and 35.3 respectively)

BREAST CANCER SCREENING participation rates (69.5% of females aged 50-69 years) are **SIGNIFICANTLY HIGHER THAN THE STATE RATE** (50.9%)