

# Gosford LGA

## PROFILE

The Gosford Local Government Area is located in the Central Coast region of NSW. It is approximately 80 km North of Sydney and 90km South of Newcastle.

## SOCIOECONOMICS

Based on a range of Census characteristics, Gosford LGA's Index of Disadvantage score is 1006 compared to the NSW score of 996 (Australia 1000). **THIS INDICATES THAT THIS LGA IS LESS DISADVANTAGED THAN THE STATE AND THE NATION AS A WHOLE**

## OUR PEOPLE



- 78.5%** of the population is Australian-born (NSW 68.6%)
- 0.43%** of people born overseas report poor proficiency in English (NSW 3.4%)
- 5.2%** of the population have a profound or severe disability (NSW 4.9%)
- Total age dependency ratio (proportion of all dependents per 100 working-age population) is 62.8 compared to NSW at 53.1
- The Total Fertility Rate is 2.00. That's **2 BIRTHS PER WOMAN** (NSW 1.91)

## HEALTH RISKS

**CURRENT SMOKERS** 17.9 per 100 (NSW 16.2)

**CONSUMING ALCOHOL AT LEVELS CONSIDERED TO BE A HIGH RISK TO HEALTH** 4.95 per 100 (NSW 4.8)

**OVERWEIGHT** 34.8 per 100 (NSW 34.6)

**OBESE** 28.6 per 100 (NSW 26.4)

## MUMS AND BUBS

**6.5%** of babies are low birth-weight (NSW 6.1%)

**13.2%** of mothers smoke during pregnancy (NSW 12%)



## CHRONIC DISEASE

Age Standardised Rate per 100

**DIABETES MELLITUS** 4.6 (NSW 5.8)

**HIGH BLOOD CHOLESTEROL** 33.4 (NSW 32.4)

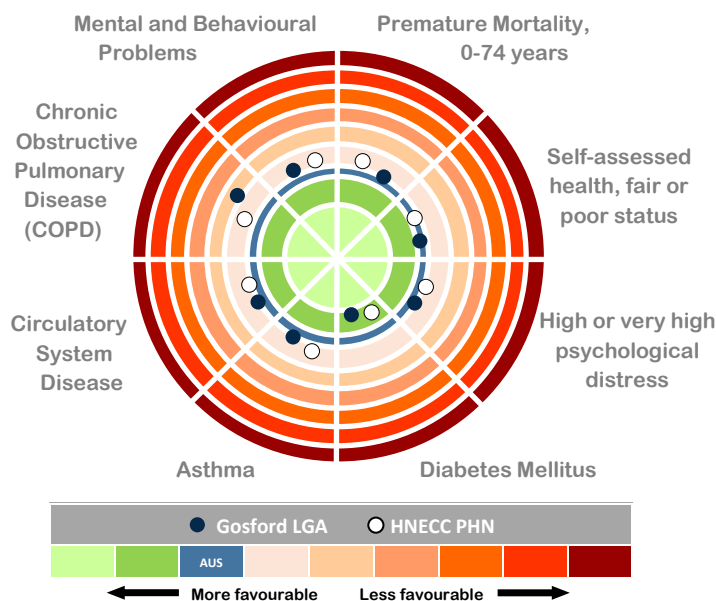
**CIRCULATORY SYSTEM DISEASES** 18.3 (NSW 17.8)

**ASTHMA** 10.6 (NSW 9.6)

**CHRONIC OBSTRUCTIVE PULMONARY DISEASE (COPD)** 3.0 (NSW 2.6)

**ARTHRITIS** 15.7 (NSW 15.3)

**PSYCHOLOGICAL DISTRESS** 11.4 (NSW 10.5)



**Population**  
171,992

**Median Age**  
42.1 years  
(NSW 37.8 years)

**Aboriginal and/or Torres Strait Islander**, 2.7% of total population (NSW 2.9%)

**65 years +**, 19.8% of total population (NSW 15.2%)

**0-14 years**, 19.1% of total population (NSW 18.9%)

**GP Services**  
122.79 GPs per 100,000 residents (NSW 113)

# Gosford LGA



**phn**  
HUNTER NEW ENGLAND  
AND CENTRAL COAST  
An Australian Government Initiative

The Population to 2036 is expected to increase by 0.7% each year

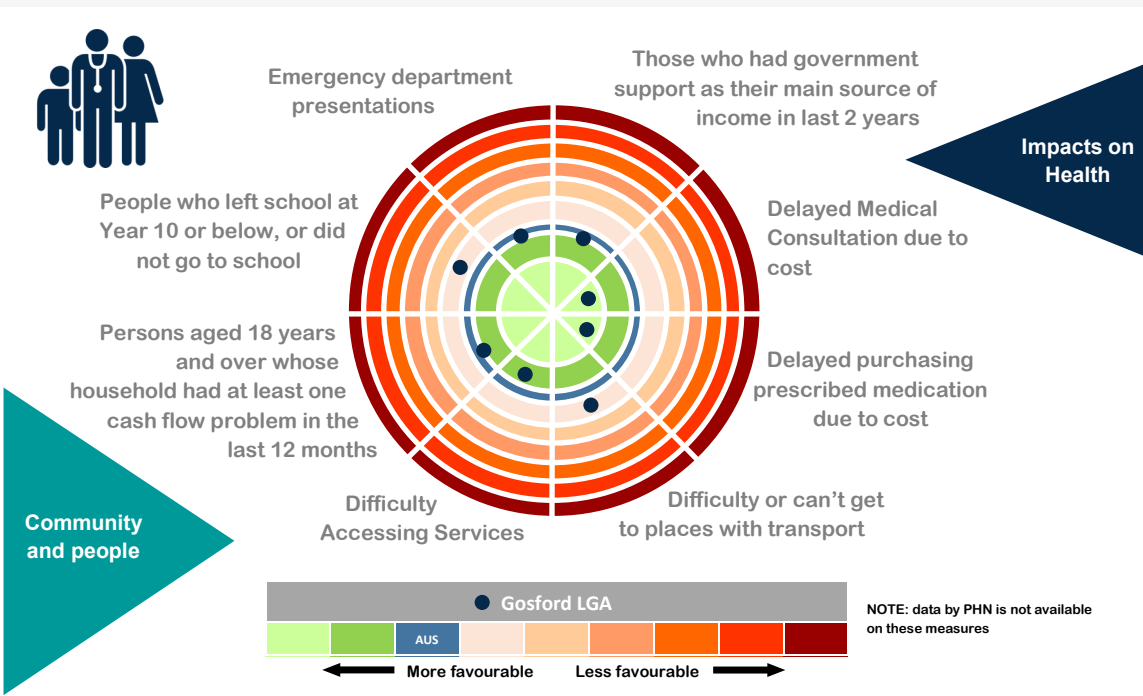
The unemployment rate is 4.8% (NSW 5.8%)

The median age of death is 82 years (NSW 81 years)

75.3% of dwellings had an internet connection (NSW 76.3%)

23.9% of families are single parent families with children aged less than 15 years (NSW 21.2%)

In 2013-14 there were 28,171 semi-urgent and non-urgent presentations to the Gosford Emergency Department



**IMMUNISATIONS**

92.3% of children are **FULLY IMMUNISED AT 2 YEARS OF AGE** compared to 90.7% for NSW

77.7% of teenage girls **HAVE RECEIVED THE HPV VACCINE** (NSW 70.8%)

**PREVENTABLE HOSPITALISATIONS**

For every **1000 PERSONS** admitted to hospital, **20.7 ARE CONSIDERED POTENTIALLY PREVENTABLE**. This compares to the NSW rate of 22.65/1000

**SCREENING**

**CERVICAL CANCER SCREENING** participation rates (58.1% of females aged 20-69) are **SLIGHTLY HIGHER THAN THE STATE RATE** (56.1%)

**BOWEL CANCER SCREENING** participation rates (30.1% of males and 35.8% of females) are **SIMILAR TO THE STATE RATES** (31.0% and 35.3 respectively)

**BREAST CANCER SCREENING** participation rates (51.1% of females aged 50-69 years) are **SIMILAR TO THE STATE RATE** (50.9%)