

Guyra LGA

PROFILE

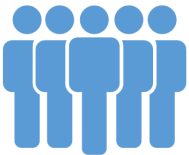
The Guyra Local Government Area is located midway between Armidale and Glen Innes on the Northern Tablelands in the New England region of NSW.

SOCIOECONOMICS

Based on a range of Census characteristics, Guyra LGA's Index of Disadvantage score is 931 compared to the NSW score of 996 (Australia 1000). **THIS INDICATES THAT THIS LGA IS SIGNIFICANTLY MORE DISADVANTAGED THAN THE STATE AND THE NATION**

OUR PEOPLE

- 90%** of the population is Australian-born (NSW 68.6%)
- 0.07%** of people born overseas report poor proficiency in English (NSW 3.4%)
- 5.9%** of the population have a profound or severe disability (NSW 4.9%)
- Total age dependency ratio (proportion of all dependents per 100 working-age population) is 75.4 compared to NSW at 53.1
- The Total Fertility Rate is 2.71. That's **2.71 BIRTHS PER WOMAN** (NSW 1.91)



HEALTH RISKS

- CURRENT SMOKERS** 20.6 per 100 (NSW 16.2)
- CONSUMING ALCOHOL AT LEVELS CONSIDERED TO BE A HIGH RISK TO HEALTH** 5.4 per 100 (NSW 4.8)
- OVERWEIGHT** 35.5 per 100 (NSW 34.6)
- OBESE** 30.4 per 100 (NSW 26.4)

MUMS AND BUBS

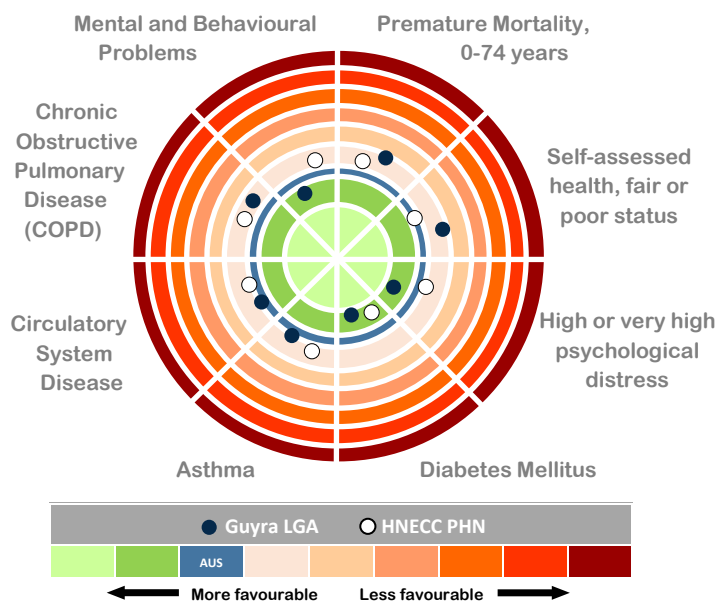
- 11.6%** of babies are low birth-weight (NSW 6.1%)
- 23.4%** of mothers smoke during pregnancy



CHRONIC DISEASE

Age Standardised Rate per 100

- DIABETES MELLITUS** 4.5 (NSW 5.8)
- HIGH BLOOD CHOLESTEROL** 32.4 (NSW 32.4)
- CIRCULATORY SYSTEM DISEASES** 18.6 (NSW 17.8)
- ASTHMA** 10.8 (NSW 9.6)
- CHRONIC OBSTRUCTIVE PULMONARY DISEASE (COPD)** 2.7 (NSW 2.6)
- ARTHRITIS** 16.5 (NSW 15.3)
- PSYCHOLOGICAL DISTRESS** 9.4 (NSW 10.5)



Population
4,619

Median Age
41.7 years
(NSW 37.8 years)

Aboriginal and/or Torres Strait Islander, 8% of total population
(NSW 2.9%)

65 years +, 19.3% of total population
(NSW 15.2%)

0-14 years, 25.9% of total population
(NSW 18.9%)

GP Services
64.9 GPs per 100,000 residents
(NSW 113)

Guyra LGA



The Population to 2036 is expected to decrease by 0.3% each year

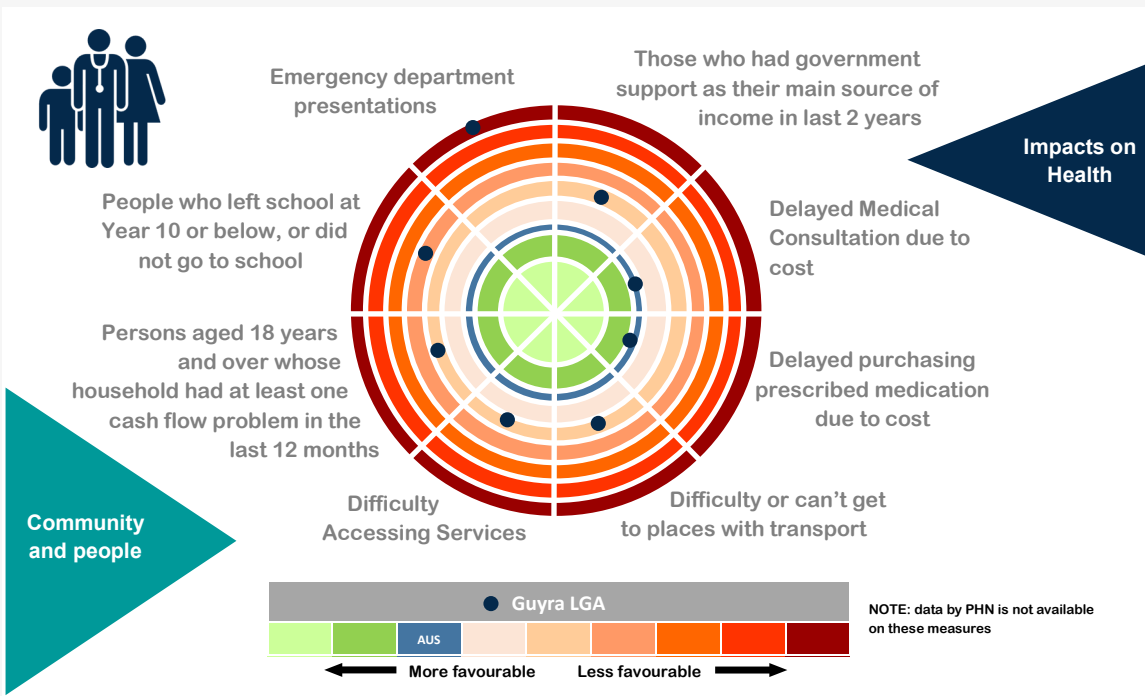
The unemployment rate is 7.2% (NSW 5.8%)

The median age of death is 79 years (NSW 81 years)

60.6% of dwellings had an internet connection (NSW 76.3%)

23.3% of families are single parent families with children aged less than 15 years (NSW 21.2%)

In 2013-14 there were 1,982 semi-urgent and non-urgent presentations to the Guyra and Tingha MPS Emergency Departments



IMMUNISATIONS

93.2% of children are **FULLY IMMUNISED AT 2 YEARS OF AGE** compared to 90.7% for NSW

55.3% of teenage girls **HAVE RECEIVED THE HPV VACCINE** (NSW 70.8%)

PREVENTABLE HOSPITALISATIONS

For every **1000 PERSONS** admitted to hospital, **34.8 ARE CONSIDERED POTENTIALLY PREVENTABLE**

This compares to the NSW rate of 22.65/1000

SCREENING

CERVICAL CANCER SCREENING participation rates (57.7% of females aged 20-69) are **SLIGHTLY HIGHER THAN THE STATE RATE** (56.1%)

BOWEL CANCER SCREENING participation rates (31.6% of males and 44.6% of females) are **SLIGHTLY HIGHER FOR MALES THAN THE STATE RATE AND HIGHER THAN THE STATE RATE FOR FEMALES** (31.0% and 35.3% respectively)

BREAST CANCER SCREENING participation rates (63.3% of females aged 50-69 years) are **HIGHER THAN THE STATE RATE** (50.9%)