

# Inverell LGA



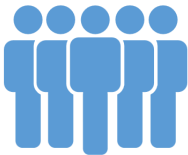
## PROFILE

The Inverell Local Government Area is located within the New England North West region of NSW adjacent to the Macintyre River and the Gwydir Highway.

## SOCIOECONOMICS

Based on a range of Census characteristics, Inverell LGA's Index of Disadvantage score is 921 compared to the NSW score of 996 (Australia 1000). **THIS INDICATES THAT THIS LGA IS SIGNIFICANTLY MORE DISADVANTAGED THAN THE STATE AND THE NATION**

## OUR PEOPLE



- 88.9%** of the population is Australian-born (NSW 68.6%)
- 0.4%** of people born overseas report poor proficiency in English (NSW 3.4%)
- 5.6%** of the population have a profound or severe disability (NSW 4.9%)
- Total age dependency ratio (proportion of all dependents per 100 working-age population) is 73.1 compared to NSW at 53.1
- The Total Fertility Rate is 2.35. That's **2.35 BIRTHS PER WOMAN** (NSW 1.91)

## HEALTH RISKS

**CURRENT SMOKERS** 22.6 per 100 (NSW 16.2)

**CONSUMING ALCOHOL AT LEVELS CONSIDERED TO BE A HIGH RISK TO HEALTH** 5.4 per 100 (NSW 4.8)

**OVERWEIGHT** 34.4 per 100 (NSW 34.6)

**OBESE** 31.9 per 100 (NSW 26.4)

## MUMS AND BUBS

**8.6%** of babies are low birth-weight (NSW 6.1%)

**23.7%** of mothers smoke during pregnancy (NSW 12%)



## CHRONIC DISEASE

Age Standardised Rate per 100

**DIABETES MELLITUS** 5.4 (NSW 5.8)

**HIGH BLOOD CHOLESTEROL** 31.3 (NSW 32.4)

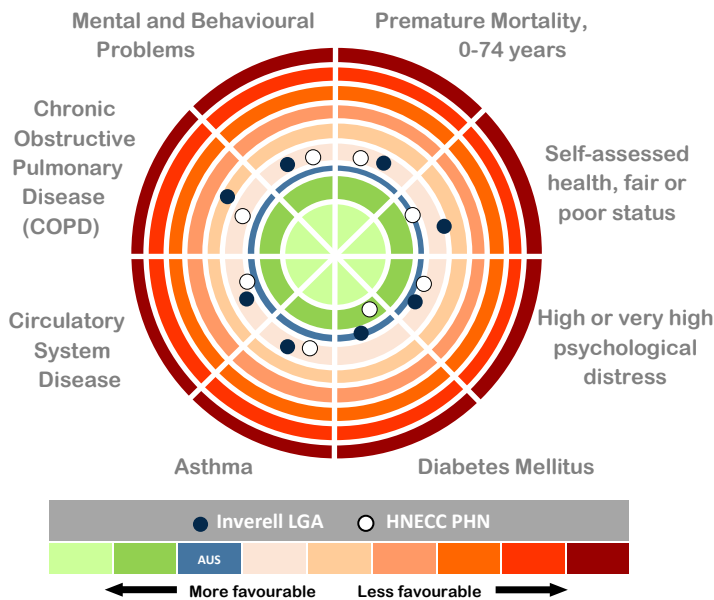
**CIRCULATORY SYSTEM DISEASES** 18.9 (NSW 17.8)

**ASTHMA** 12.1 (NSW 9.6)

**CHRONIC OBSTRUCTIVE PULMONARY DISEASE (COPD)** 3.1 (NSW 2.6)

**ARTHRITIS** 18.6 (NSW 15.3)

**PSYCHOLOGICAL DISTRESS** 11.2 (NSW 10.5)



An Australian Government Initiative

**Population**  
**16,846**

**Median Age**  
**40.4 years**  
(NSW 37.8 years)

**Aboriginal and/or Torres Strait Islander, 8.4% of total population**  
(NSW 2.9%)

**65 years +, 19.6% of total population**  
(NSW 15.2%)

**0-14 years, 23.9% of total population**  
(NSW 18.9%)

**GP Services**  
**88.81 GPs per 100,000 residents**  
(NSW 113)

# Inverell LGA



**phn**  
HUNTER NEW ENGLAND  
AND CENTRAL COAST

An Australian Government Initiative

The Population to 2036 is expected to increase by 0.7% each year

The unemployment rate is 10.7% (NSW 5.8%)

The median age of death is 80.5 years (NSW 81 years)

61.9% of dwellings had an internet connection (NSW 76.3%)

28.7% of families are single parent families with children aged less than 15 years (NSW 21.2%)

In 2013-14 there were 7,893 semi-urgent and non-urgent presentations to the Inverell Emergency Department



Emergency department presentations

Those who had government support as their main source of income in last 2 years

Impacts on Health

People who left school at Year 10 or below, or did not go to school

Delayed Medical Consultation due to cost

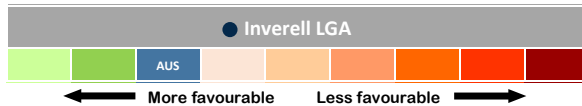
Persons aged 18 years and over whose household had at least one cash flow problem in the last 12 months

Delayed purchasing prescribed medication due to cost

Community and people

Difficulty Accessing Services

Difficulty or can't get to places with transport



NOTE: data by PHN is not available on these measures

More favourable ← Less favourable →



96.1% of children are **FULLY IMMUNISED AT 2 YEARS OF AGE** compared to 90.7% for NSW

## IMMUNISATIONS

72% of teenage girls **HAVE RECEIVED THE HPV VACCINE** (NSW 70.8%)



## PREVENTABLE HOSPITALISATIONS

For every **1000 PERSONS** admitted to hospital, **30.9 ARE CONSIDERED POTENTIALLY PREVENTABLE**. This compares to the NSW rate of 22.65/1000



## SCREENING

**CERVICAL CANCER SCREENING** participation rates (62.1% of females aged 20-69) are **SLIGHTLY HIGHER THAN THE STATE RATE** (56.1%)



**BOWEL CANCER SCREENING** participation rates (34% of males and 39.3% of females) are **SLIGHTLY HIGHER THAN THE STATE RATES** (31.0% and 35.3% respectively)

**BREAST CANCER SCREENING** participation rates (61.5% of females aged 50-69 years) are **HIGHER THAN THE STATE RATE** (50.9%)