

Lake Macquarie LGA

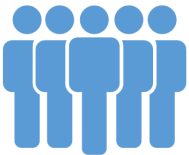
PROFILE

The Lake Macquarie Local Government Area is located about 60 minutes North of Sydney and 10 minutes to Newcastle along 11kms of NSW coastline. Lake Macquarie is about twice the size of Sydney Harbour.

SOCIOECONOMICS

Based on a range of Census characteristics, Lake Macquarie LGA's Index of Disadvantage score is 995 compared to the NSW score of 996 (Australia 1000). **THIS INDICATES THAT THIS LGA SHARES A SIMILAR LEVEL OF DISADVANTAGE WITH THE STATE AND THE NATION**

OUR PEOPLE



86.2% of the population is Australian-born (NSW 68.6%)

0.31% of people born overseas report poor proficiency in English (NSW 3.4%)

6.2% of the population have a profound or severe disability (NSW 4.9%)

Total age dependency ratio (proportion of all dependents per 100 working-age population) is 61.2 compared to NSW at 53.1

The Total Fertility Rate is 1.98. That's **1.98 BIRTHS PER WOMAN** (NSW 1.91)

HEALTH RISKS

CURRENT SMOKERS 18.5 per 100 (NSW 16.2)

CONSUMING ALCOHOL AT LEVELS CONSIDERED TO BE A HIGH RISK TO HEALTH 5.1 per 100 (NSW 4.8)

OVERWEIGHT 35.5 per 100 (NSW 34.6)

OBESE 29.7 per 100 (NSW 26.4)

MUMS AND BUBS

6.4% of babies are low birth-weight (NSW 6.1%)

16.4% of mothers smoke during pregnancy (NSW 12%)



CHRONIC DISEASE

Age Standardised Rate per 100

DIABETES MELLITUS
4.84 (NSW 5.8)

HIGH BLOOD CHOLESTEROL
32.1 (NSW 32.4)

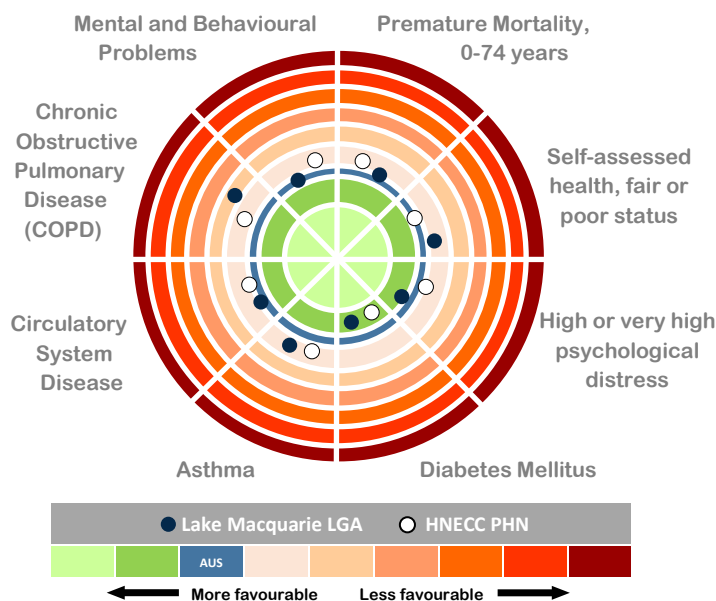
CIRCULATORY SYSTEM DISEASES
18.4 (NSW 17.8)

ASTHMA
11.2 (NSW 9.6)

CHRONIC OBSTRUCTIVE PULMONARY DISEASE (COPD)
3.0 (NSW 2.6)

ARTHRITIS
16.7 (NSW 15.3)

PSYCHOLOGICAL DISTRESS
10.2 (NSW 10.5)



Population
202,676

Median Age
41.4 years
(NSW 37.8 years)

Aboriginal and/ or Torres Strait Islander, 3.5% of total population
(NSW 2.9%)

65 years +,
18.9% of total population
(NSW 15.2%)

0-14 years,
19.5% of total population
(NSW 18.9%)

GP Services
108.9 GPs
per 100,000
residents
(NSW 113)

Lake Macquarie LGA



The Population to 2036 is expected to increase by 1% each year

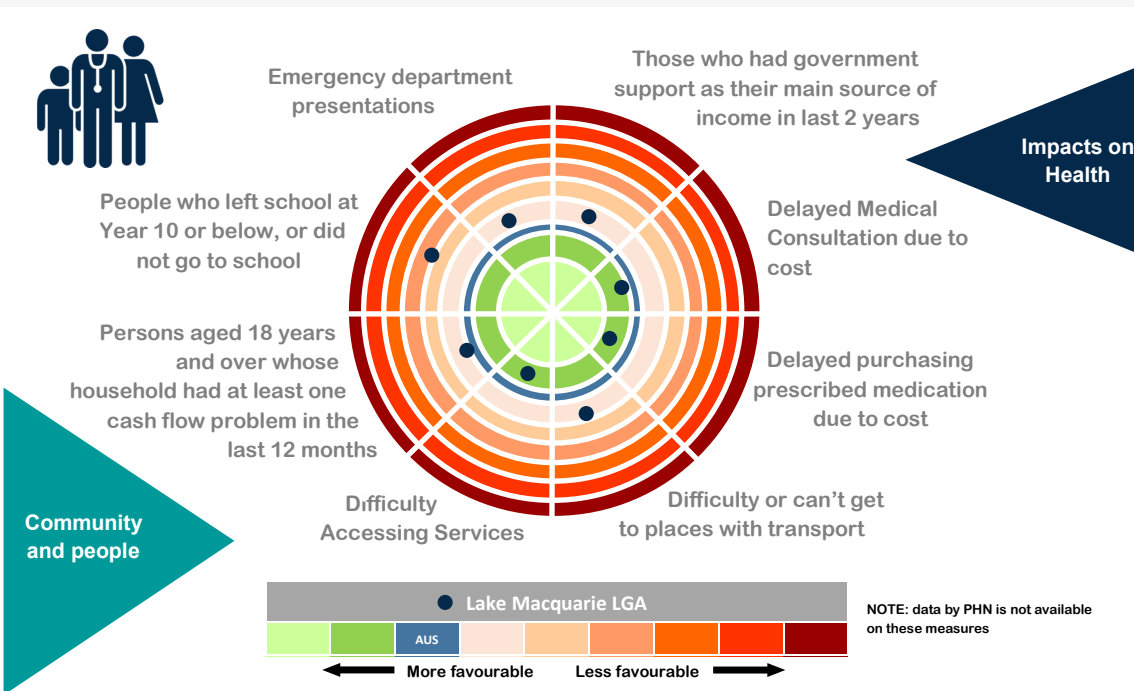
The unemployment rate is 7.6% (NSW 5.8%)

The median age of death is 82 years (NSW 81 years)

73.8% of dwellings had an internet connection (NSW 76.3%)

25.3% of families are single parent families with children aged less than 15 years (NSW 21.2%)

In 2013-14 there were 18,169 semi-urgent and non-urgent presentations to the Belmont Emergency Department



IMMUNISATIONS

93.2% of children are **FULLY IMMUNISED AT 2 YEARS OF AGE** compared to 90.7% for NSW

70.9% of teenage girls **HAVE RECEIVED THE HPV VACCINE** (NSW 70.8%)

PREVENTABLE HOSPITALISATIONS

For every **1000 PERSONS** admitted to hospital, **21.3 ARE CONSIDERED POTENTIALLY PREVENTABLE**

This compares to the NSW rate of 22.65/1000

SCREENING

CERVICAL CANCER SCREENING participation rates (60.3% of females aged 20-69) are **HIGHER THAN THE STATE RATE** (56.1%)

BOWEL CANCER SCREENING participation rates (33.6% of males and 39.6% of females) are **A HIGHER THAN THE STATE RATES** (31.0% and 35.3% respectively)

BREAST CANCER SCREENING participation rates (60% of females aged 50-69 years) are **HIGHER THAN THE STATE RATE** (50.9%)